

## Center for Supply Chain Research at Lehigh

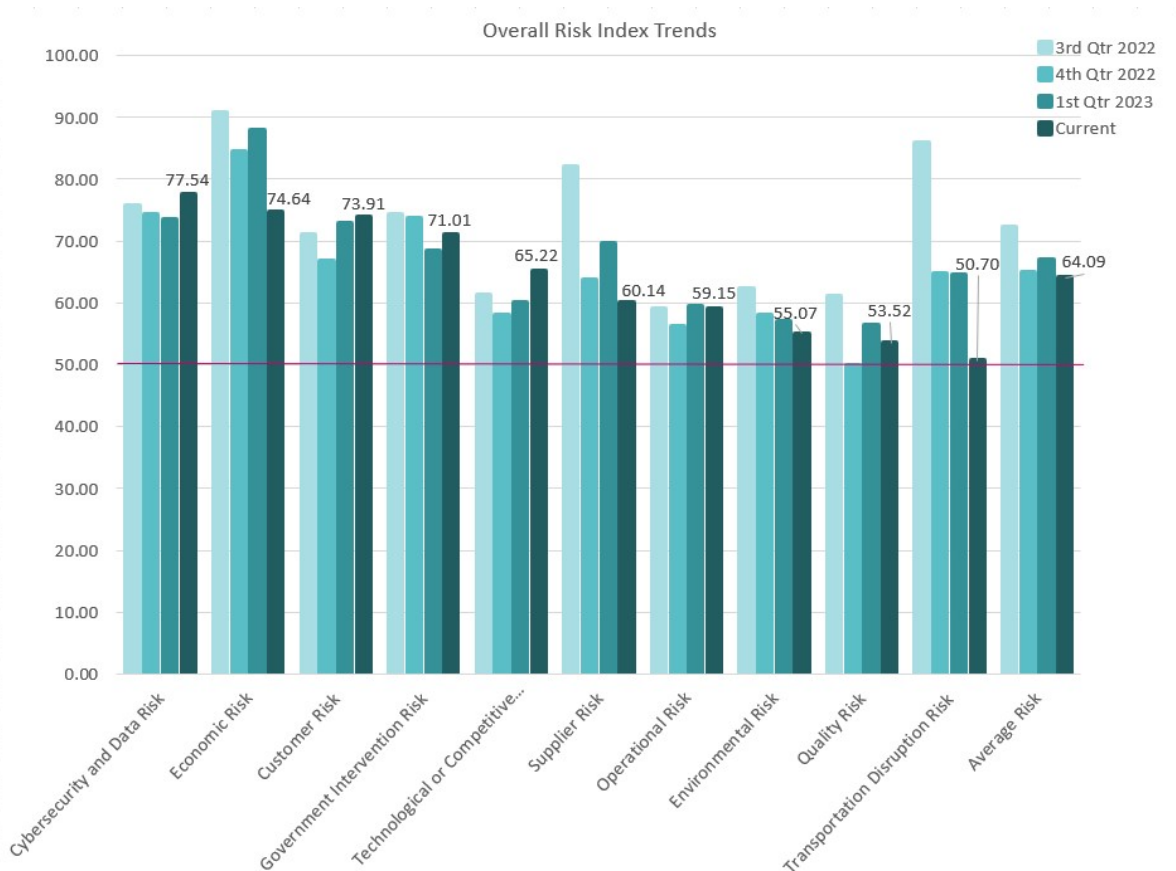


### Lehigh Business Supply Chain Risk Management Index

This is the first time that Cybersecurity is the highest risk overall and at 77.54 is the lowest number 1 risk in the last 3 years. Economic risk is 2nd overall but has dropped sharply down from 87.97 to 74.64.

[View the LRMI 2nd Quarter 2023 Report](#)

One of the advantages of examining supply chain risk is to consider how these risks change over time. The table below shows the changing levels of the risk across the 10 different areas of the supply chain this last year. It is also insightful to see that some areas of the supply chain are consistently seen as high risk and other areas of the supply chain as lower risk over the same 1-year time period.



## 2023 Spring Symposium

April 13-14, 2023

### Help Wanted: Leading, Engaging, and Nurturing your Workforce to keep your Supply Chain Moving

We will open with a cocktail reception on April 13 from 6:00 p.m. to 8:00 p.m. and follow up with a full day's program on April 14 from 8:00 a.m. to 4:00 p.m. Networking and education will feature prominently throughout the day with plenty of chances for interaction and take-aways that can be implemented at your company today.

#### Confirmed Speakers:

**David Eyes**, Vice President/General Manager of Automotive Solutions, TrueCommerce  
**Eric Cosnoski**, Experienced Manager, Finance Transformation, Grant Thornton LLP  
**Ozias Moore**, Assistant Professor Management Department, Lehigh University College of Business  
**Karyn Troxell**, VP HR for Warehousing, Penske Logistics  
**Katy Venis**, Group Director, Customer Logistics, Ryder Supply Chain Solutions  
**Han Ye**, Associate Professor Department of Decision and Technology Analytics, Lehigh University  
College of Business

#### Panel Speakers

**Pete Bayer**, SVP of Operations, Penske Logistics  
**Jeff Kanterman**, SVP of Transportation Management, NFI  
**Fred Koeck**, Business Development Manager and Supply Chain Link Connector,  
Derby Supply Chain Solutions  
**Daniela Terenzi**, TrueCommerce

More information coming soon!

Register now before the discount coupon expires. Use the cod FEB23 to get a \$150.00 discount for the 2 day seminar. Discount expires March 31st!

[View the Agenda and Register Now](#)



CENTER FOR SUPPLY CHAIN RESEARCH AT LEHIGH



[business.lehigh.edu/cscresearch](https://business.lehigh.edu/cscresearch)

Lehigh University College of Business | Center for Supply Chain Research at Lehigh | Rauch  
Business Center, 621 Taylor Street, Bethlehem, PA 18015

[Unsubscribe zacharia@lehigh.edu](mailto:zacharia@lehigh.edu)

[Update Profile](#) | [Constant Contact Data  
Notice](#)

Sent by [byincscr@lehigh.edu](mailto:byincscr@lehigh.edu)