

Center for Supply Chain Research at Lehigh

Newsletter | April 2022

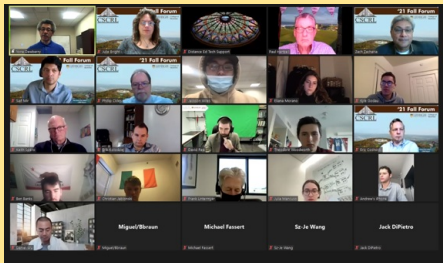
Upcoming Event

2022 Annual Spring Symposium *Utilizing Technology for Competitive Advantage in the Supply Chain*

April 21-22, 2022

We will open with an in-person cocktail reception on April 21 from 6:00 - 8:00 p.m. followed by a full-day program on April 22 from 8:00 a.m. - 4:00 p.m. Networking and education will feature prominently throughout the day with plenty of chances for interaction and take-aways that can be immediately implemented at your company.

[View the Agenda and Register](#)



2021 Fall Forum Video Highlights

The 2021 Annual Fall Forum and SCM Industry Professional Networking Night were a combination of in-person and virtual this year.

[Watch Now](#)



Lehigh Business Supply Chain Risk Management Index

In the latest report, Transportation Disruption Risk is expected to increase substantially for the upcoming 2nd Quarter 2022 and is the number one concern for supply chain professionals. Interestingly with a score of 89.5, Transportation Disruption Risk has the highest risk index across all risk categories since the creation of the LRMI. There seems to be greater worries about fuel prices, driver shortage, infrastructure and demand volatility.

[View the Report or Take the Next Survey Now](#)

Industry Partner Spotlight

Fred Koeck
Supply Chain Development Manager,
Derby Supply Chain Solutions;
President, CSCMP Lehigh Valley Roundtable

Fred Koeck is currently in a Supply Chain Development role with Derby Supply Chain Solutions. His early career was in manufacturing encompassing roles in quality control, sourcing, scheduling, warehousing, and distribution, transitioning into customer service and sales roles in later years.



Read
More

Latest Publication



Hoarding is a bad idea during times of supply-chain uncertainty by [Phil Coles](#)

Hay was in short supply, so we stocked up at high prices. It was a costly mistake—and still is.

Read Now

Supply Chain News

- [U.S. Food Supply Is Under Pressure, From Plants to Store Shelves](#)
- [ISM reports strong February manufacturing output](#)
- [Expeditors outlines severity of cyberattack, partially resumes operations](#)



LEHIGH | College of
UNIVERSITY | Business

CENTER FOR SUPPLY CHAIN RESEARCH AT LEHIGH



business.lehigh.edu/cscl