

Center for Supply Chain Research at Lehigh

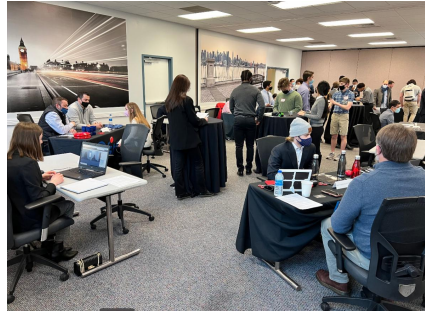
Newsletter | February 2022

Latest News

CSCRL Spring SCM Career Fair

February 16th, the SCM Spring Career Fair was held with 9 companies talking to over 40 supply chain students about internships and full time opportunities. Some companies interview students in person and others interviewed students virtually.

Our next SCM focused career fair will be in the fall, September 21. Please contact Zach Zacharia (zacharia@lehigh.edu) if you would like to participate.



Lehigh Business Supply Chain Risk Management Index

The 2022 2nd quarter survey is now open. We need your input! This survey will take less than 10 minutes to finish where you will be asked to look at 10 supply chain risks and to select whether the risks will increase, remain the same or decrease in the next quarter.

[Take the Survey Now](#)

Upcoming Event

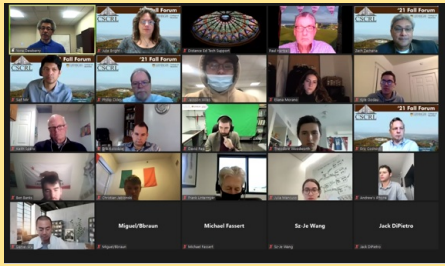
2022 Annual Spring Symposium
Utilizing Technology for Competitive Advantage in the Supply Chain

April 21-22, 2022

We will open with an in-person cocktail reception on April 21 from 6:00 - 8:00 p.m. followed by a full-day program on April 22 from 8:00 a.m. - 4:00 p.m. Networking and education will feature prominently throughout the day with plenty of chances for interaction and take-aways that can be immediately implemented at your company.

[View the Agenda and Register](#)

Use coupon code *Early22* at registration to get \$150.00 your registration fee when you register by Feb. 28.



2021 Fall Forum Video Highlights

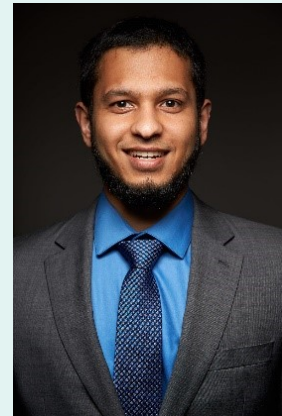
The 2021 Annual Fall Forum and SCM Industry Professional Networking Night were a combination of in-person and virtual this year.

[Watch Now](#)

Industry Partner Spotlight

Sarim Khan
Supply Chain Engineer
Lutron Electronics

Sarim Khan joined Lutron Electronics in 2012, after graduating from Lehigh University with a Bachelors of Information & Systems Engineering.



[Read More](#)

Latest Publication



Hoarding is a bad idea during times of supply-chain uncertainty by [Phil Coles](#)

Hay was in short supply, so we stocked up at high prices. It was a costly mistake—and still is.

[Read Now](#)

Supply Chain News

- [Survey: Talent and labor on the rise](#)
- [2022 may be pivotal year for California's green rules for trucks](#)
- [Master Lock's pandemic pivot](#)



business.lehigh.edu/cscl