

Center for Supply Chain Research at Lehigh

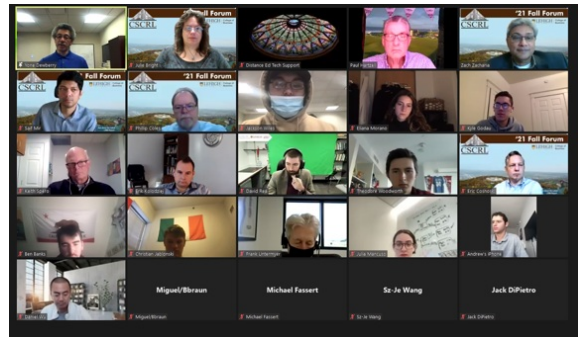
Newsletter | November 2021

Latest News

2021 Annual Fall Forum and SCM Industry Professional Networking Night

The 2021 Annual Fall Forum and SCM Industry Professional Networking Night were a combination of in-person and virtual this year. The networking night was held in-person on Thursday November 4 and the virtual Fall Forum was held on November 5.

The keynote Speaker was Yone Dewberry, SVP and Chief Supply Chain Officer, Land O'Lakes, Inc.



Featured Speaker

Yone Newberry SVP and Chief Supply Chain Officer, Land O'Lakes, Inc.

Yone Newberry spoke about how Land O' Lakes is not just a butter company.

[Read More](#)

Upcoming Event

Mark your calendars:
2022 Annual Spring Symposium
Technology in Supply Chain
April 21-22, 2022

We will open with an in-person cocktail reception on April 21 from 6:00 - 8:00 p.m. followed by a full day program on April 22 from 8:00 a.m. - 4:00 p.m. Networking and education will feature prominently throughout the day with plenty of chances for interaction and take-aways that can be immediately implemented at your company.

Industry Partner Spotlight

Jeff Kanterman

Vice President Transportation Management, NFI

Jeff Kanterman joined NFI in 2014 as Vice President fo Transportation Management. Our



partners share their expertise and help support the CSCRL.

[Read More](#)

Lehigh Business Supply Chain Risk Management Index



In the latest report, transportation disruption risk is expected to increase substantially for the upcoming 3rd Quarter 2021 and has become the number one concern for supply chain professionals.

[Take the Survey Now](#)

Latest Podcast

Effects of Disruptions in the Supply Chain on the Holidays

Professor of Practice, Phillip Coles, talks about how some supply chain issues are due to the pandemic and some are just bad risk management. And, he reminds us of lessons learned during the great Cabbage Patch Kids doll shortage of '83.



[Listen Now](#)

Supply Chain News

- [President Biden reveals plans targeted at speeding up supply chain amid continued shortages, rising costs](#)
- [It's official. China's manufacturing is in trouble](#)
- [Lithium battery maker airlifts assembly line to leapfrog port congestion](#)



LEHIGH
UNIVERSITY

College of
Business

CENTER FOR SUPPLY CHAIN RESEARCH AT LEHIGH



business.lehigh.edu/cscl