



## October 2020 Newsletter



### **2020 Annual Fall Forum Demand Driven Supply Chains will be going Virtual November 13, 2020**

Center for Supply Chain Research at Lehigh

#### **Demand Driven Supply Chains**

For the first time ever, the Fall Forum will be held virtually! The CSCRL Fall Forum is an opportunity to learn and discuss new insights from industry and academic experts related to the overall theme of Demand Driven Supply Chains. In addition, there will be presentations that discuss the specific impact of new and innovative supply chain concepts such as data mining, AI machine learning and cyber security. What are some factors that enable supply chains to adapt to ever changing demand? These live zoom sessions will have plenty of time to ask questions to gain greater understanding and applicability to your own company.

In addition we will also have specific topic breakout rooms for a small number of participants to gather and discuss topics of their own interest. There will not be a presenter but rather a facilitator to enable a good discussion of the topic.

Registration for our Fall Forum has been \$350 in the past but we realize many of our industry partners are struggling and we want to do our part to help so we have waived all registration fees. However, we have always used funds from our conference to subsidize our SCM student activities. If you are interested in helping our SCM students, when you register please select the Donate button.

[REGISTER HERE](#)



If you would like to take a greater role in the conference and become a member of the CSCRL, please contact Zach G. Zacharia ([zgz208@lehigh.edu](mailto:zgz208@lehigh.edu)) or Eric Cosnoski ([eac296@lehigh.edu](mailto:eac296@lehigh.edu)) for sponsorship opportunities.





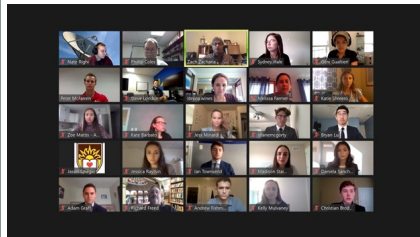
## Lehigh Risk Management Index

The Center for Supply Chain Research at Lehigh University and the Council of Supply Chain Management Professionals have teamed up to create a quarterly industry-wide survey and report that will assist supply chain professionals in understanding the different levels of supply chain risk that your organization will face, allowing you to prepare and plan accordingly.

The benefit of participating and reading the LRMI report is that you get a perspective on what other supply chain managers have identified as potential areas of higher risk and other areas of less risk. Supply chain managers do not have time to check with their peers on what are the areas of higher risk. The LRMI does that for you - by looking at 10 broad areas of supply chain risk it is possible to see what are the 4 most important areas where supply chain managers have identified as potential areas of high risk and just as important areas where the risk is either going to stay the same or perhaps decrease in risk.

The specific LRMI number for the 4th Quarter is 69.49. A total rating is the average level of risk across all 10 categories perceived by supply chain managers think about risk averaged across all 10 categories. This LRMI number of 66.97 is very high suggesting supply chain managers see there is significantly high risk in the next Quarter.

[Take Our Survey!](#)



## Supply Chain Management Career Fair 2020

Supply Chain Management held its semiannual Career Fair for the first time via Zoom on September 9, 2020. Five companies and over forty students participated in this unique event. The students commented that they appreciated the extra time the companies took to meet with each student individually.



## Leaders In - Future of Supply Chains

The coronavirus pandemic prompted various commentators to argue that the hugely efficient, just-in-time supply chains that had underpinned the global economy for so long were not fit for such circumstances, with some even voicing the heretical thought that more friction should be added to the process so that more stock is held for just such rainy days. It's hard to tell just what the "new normal" will be for supply chains, but what seems certain is that changes will emerge. Analytics and digital tools are likely to be increasingly important in providing the right information at all stages of the supply chain, and

to all participants in the supply chain. "Share information along the supply chain," said Zach G. Zacharia, associate professor of supply chain management and director of the Center for Supply Chain Research. "Understand who your suppliers are and who their suppliers are. Look for ways to work together so you will all survive." (July 16) [Future of Supply Chains](#)

## Join our Community!

**WE NEED YOUR HELP!** The center is trying to find out what topics and issues you care about and get to know you on a personal level. By connecting with us on LinkedIn and Facebook, you can find out the latest projects we are working on, get involved with the center, and let us know the topics that keep you up at night. We just rolled out a new site so check it out over the next month and send us a friend request. We look forward to improving our relationship!



## Thank You for supporting Our Students!



Check our website for the latest news and information on the center.

[CSCR @ Lehigh](#)

Meet Our Affiliated Faculty