



## June Newsletter



### **2020 Annual Fall Forum Demand Driven Supply Chains November 12-13, 2020**

Center for Supply Chain Research at  
Lehigh

**Fall Forum Networking Reception**

Thursday, 11/12 from 5:30-7:30pm, Wood Dining Room, Iacocca Hall.

### Demand Driven Supply Chains

The Fall Forum is an opportunity to learn and discuss new insights from industry and academic experts related to the overall theme of Demand Driven Supply Chains. There will be presentations that discuss the specific impact of new and innovative supply chain concepts. There will also be interactive workshops where participants will have opportunities to learn from each other. Finally, there will be ample opportunities to network at the opening reception, breakfast session, lunch session and closing reception with Industry, Students and Faculty.

**REGISTER HERE**



If you would like to take a greater role in the conference and become a supporter, please contact Zach G. Zacharia ([zgz208@lehigh.edu](mailto:zgz208@lehigh.edu)) or Eric Cosnoski ([eac296@lehigh.edu](mailto:eac296@lehigh.edu)) for sponsorship opportunities.



Visit the CSCR @ Lehigh



**Phillip Coles, Professor of Practice in the DATA department was recently interviewed by WFMZ, Allentown about potential meat shortages.**

BETHLEHEM, Pa. - It's a move to help stretch the meat supply across the nation. Costco is the latest retailer to limit the amount of meat



customers can buy during one trip. "They learned from what happened with other shortages in canned food, pastas, in the produce section because we have all this panic buying happening," said Philip Coles, a professor of practice in supply chain management at Lehigh University.

[SEE THE STORY ON WFMZ HERE](#)

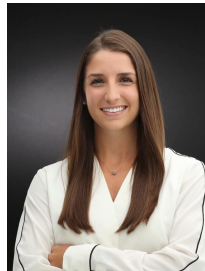
---

## Supply Chain Management Awards 2020

Please join us in congratulating this years Supply Chain Management Award winners.



Senior Supply Chain  
Management Scholar Award  
Patrece Savino



Supply Chain Management  
Professor Award  
Christine Balestra



Junior Supply Chain  
Management Scholar Award  
Madison Staiman



### **The physical internet as a new supply chain paradigm: a systematic literature review and a comprehensive framework**

The current global logistics and supply chain management (SCM) practices of transporting, storing and handling physical freight are unsustainable in the long run from economic, environmental and societal perspectives. Benoit

Montreuil identified 13 specific symptoms of the unsustainable global logistics and SCM practices that constitute the "worldwide global logistics sustainability grand challenge." However, using the latest improvements in information sharing, interconnectivity, information technology, data mining, big data and data analytics, it is possible to develop new logistics and SCM practices that are sustainable in the long run. The Physical Internet (PI) is a new boundary-spanning area of research and practice that seeks to address this grand challenge. The aim of the PI is to optimize logistics and SCM processes so as to create more efficient, effective and sustainable supply chains (SCs), which may lead to innovation of SC models and strategies.

[Click Here to read more](#)

---

## Join our Community!

**WE NEED YOUR HELP!** The center is trying to find out what topics and issues you care about and get to know you on a personal level. By connecting with us on LinkedIn and Facebook, you can find out the latest projects we are working on, get involved with the center, and let us know the topics that keep you up at night. We just rolled out a new site so check it out over the next month and send us a friend request. We look forward to improving our relationship!





## Thank You for supporting Our Students!



Check our website for the latest news and information on the center.

[CSCR @ Lehigh](#)

Meet Our Affiliated Faculty